

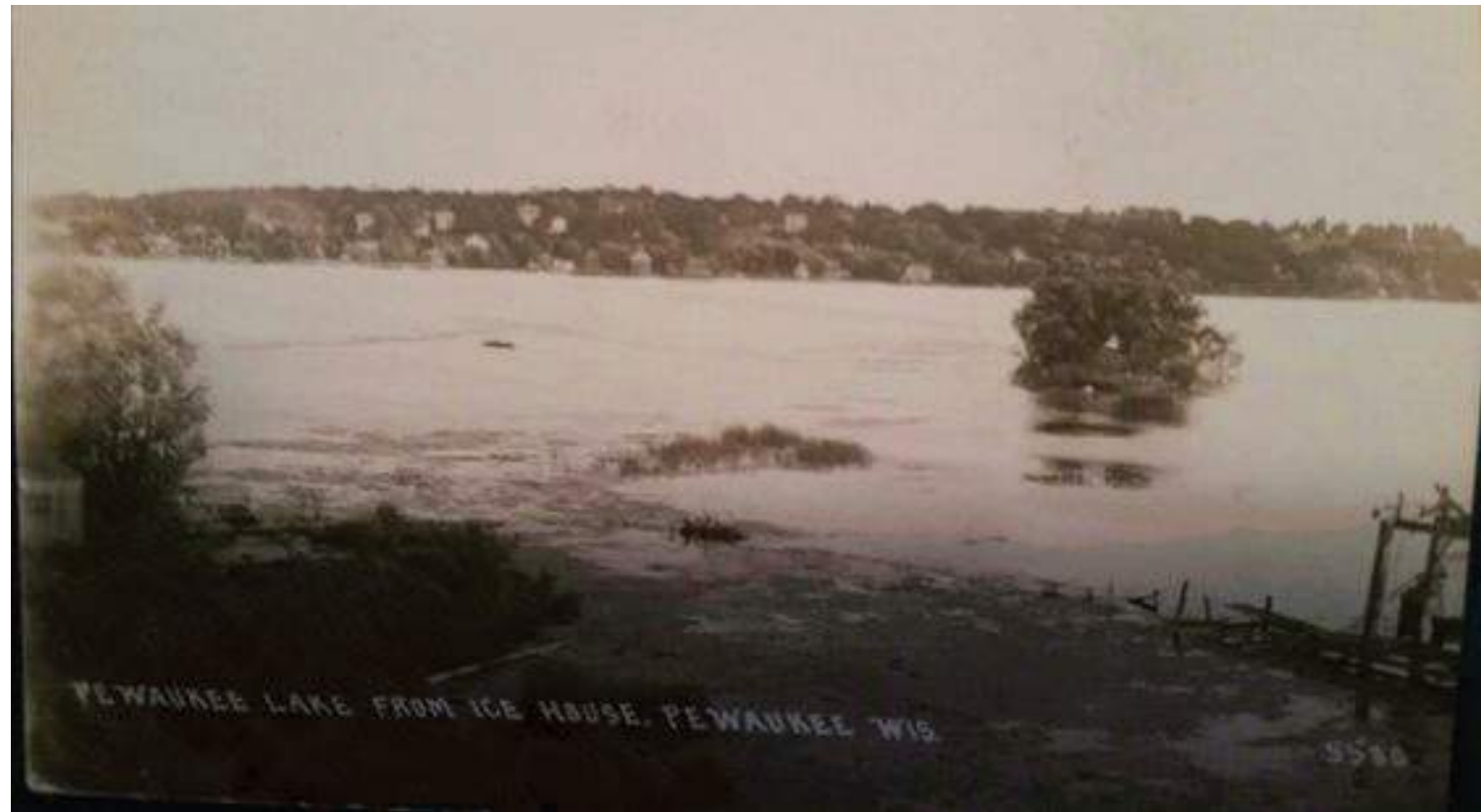
SAWMILLS

- PEWAUKEE'S FIRST SETTLER BUILT A SAWMILL UPON ARRIVING IN 1837
- WOOD FROM THE SAWMILL WAS USED FOR THE TOWN'S FIRST SCHOOL BUILDING



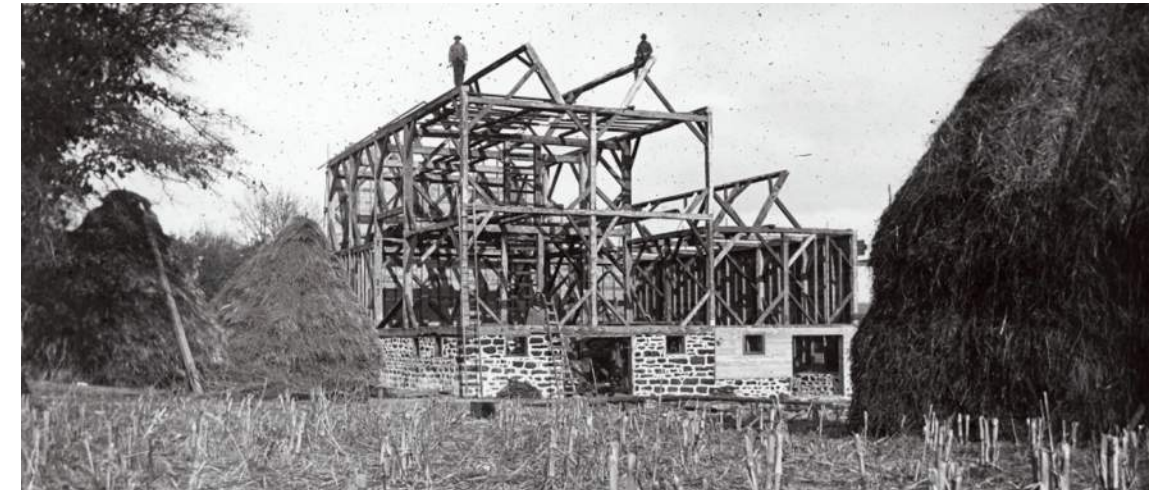
ICE HARVESTING

- THE ICE HARVESTING INDUSTRY WAS A LARGE PART OF PEWAUKEE'S HISTORY
- OVER 1/2 MILLION TONS OF ICE DISTRIBUTED EACH YEAR FROM PEWAUKEE LAKE
- BREWERIES AND THE MEAT PACKING INDUSTRY WERE THE PRIMARY USERS OF THE ICE



AGRICULTURE

- ROLLING TERRAIN AND FERTILE SOIL WERE PRIMARY REASON FOR SETTLEMENT
- LARGE FARMING COMMUNITY
- PRIOR TO INTERURBAN LINE THE RAIL WAS USED TO SHIP AGRICULTURAL PRODUCTS



DESIGN DRIVERS

- 1 FOSTER A NEIGHBORHOOD ENVIRONMENT THROUGH SCALE, SHARED AMENITIES AND PEDESTRIAN CONNECTIVITY**
- 2 PROTECT AND REINFORCE ACCESS TO THE NATURAL LANDSCAPE THROUGH VIEW CORRIDORS, PASSIVE AMENITIES AND EFFICIENT PLANNING**
- 3 DEVELOP VERNACULAR THAT RESPONDS TO MATERIALS, FORMS, & METHODS FROM PEWAUKEE'S RICH HISTORY**

VISION STATEMENT

TO CREATE A COMMUNITY THAT IS DISTINGUISHED BY PEWAUKEE'S RICH HISTORY AND CONNECTION TO THE NATURAL LANDSCAPE. WILLOW RUN WILL EMPHASIZE NATURAL CONNECTIONS, RESOURCES AND TRADITIONAL VERNACULAR.